

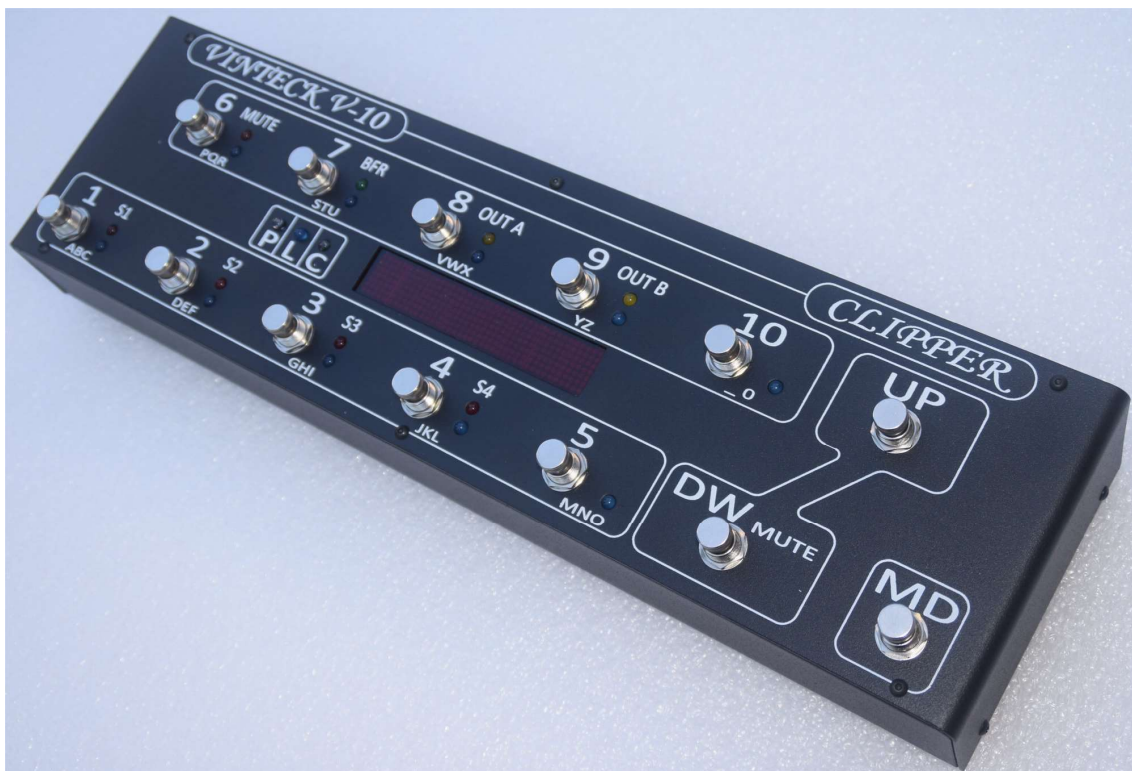
# Vinteck<sup>sas</sup>

Di Guido Michetti & C.

10128 Torino Corso Vittorio Emanuele II, 123  
Tel. + 39 - 339 7626891 fax + 39 - 011 - 547712  
Laboratorio Via Limone 22 10141 Torino  
Nr. Iscrizione RAEE IT08020000002500  
(web) <http://www.vinteck.com>  
(e-mail) [info@vinteck.com](mailto:info@vinteck.com)

## V-10 CLIPPER

*True-bypass MIDI switching Pedalboard*



**User manual  
Ed. 01 rev. 4**

SW: DCEA - 0862

Thank you very much for purchase of V-8 pedalboard.  
 We really hope that it will be good friend for several ours of music. We ask you to write us by email at [support@vinteck.com](mailto:support@vinteck.com) any problems or any ideas about hardware & software you think may be useful to us to built a better product.  
 We are anytime available for any help you may need about how to use the V-8

Keep on rockin' (blues, jazz, latin, fusion....)

*Guido Michetti*

## Contents

1	Instrument's marking	pag.	2
2	general warnings	pag.	3
3	instructions manual	pag.	3
4	technical description	pag.	4
5	installation and connections (wiring)	pag.	5
6	programming and MIDI manager	pag.	8
7	spare parts	pag.	13
8	warranty terms and conditions	pag.	14
9	support	pag.	14

### 1-instrument marking.

V-10 got in back side a little non removable area with serial and years of building.  
 It is very important to report this information in case of need of technical supply.



### 2- general warnings

- please read the operator manual before starting the use of V-8 and follow the informations.
- Maintenance must be operated **ALWAYS** with the instrument not connected to power supply

**V-8 is powered by an external 12 VDC 500mA. In no any case external power supply must be opened or disassembled.**

**In no any case the power plug and switch must be disassembled.**

**Vinteck declines all responsibility for damages to persons, animals and things caused by the non-observance of such a provision.**

#### **Warning**

- Use of the machine by not properly trained staff.
- Improper use of the machine.
- Electric energy defects
- Repairing and changes made without authorisation.
- Use of not original or not specific for the model parts.
- Partial or total non-observance of the instructions.
- Use of the machine against national specific laws.
- Calamity and unusual events.

#### **Remaining risk**

Definition of remaining risk: "A danger not completely reducible from the designing and the safety devices, i.e. potential and not evident danger".

Since the productive aiming, the mechanical qualities and the presupposed proper usage we didn't find any remaining risks, both during the design and the tests.

Anyway, we recommend:

- to let only trained staff using the machine;
- to check that the machine is supplied by an grounded single-phase electrical cable and the plug has an effective earth terminal.

### **3- instructions manual**

3.1 This manual is addressed to following subjects:

- Owner;
- Operators.
- Technical builder

#### **3.2 Aiming of details in I.M.**

The manual contains a clear description of all technical specifications of the machine aimed at the transport, adjusting, maintenance, caution, location of remaining risks.

#### **3.3 Using limits of I.M.**

This manual can never replace an adequate experience of an operator and so it can only be a memorandum of the main operations. We specify, moreover. That I.M. mirrors the technical data at the moment of the purchase of the machine and that the manufacturer has the right to bring up-to-date I.M. and machines without conform I.M. and previous models.

#### **3.4 How to keep this I.M.**

**The operating instruction manual has to be kept in perfect state and has to be always available for consultation. It has to follow the machine in case of transfer of property. It has to be kept until the demolition of the machine itself.**

To order the up-to-date versions of I.M. and for any further information, please contact Vinteck sas or the nearest Vinteck sas dealer. We will be pleased to receive your suggestions to improve our quality.

Note for the use of this machine in a foreign country: contingent laws and restrictions in place for this kind of machine in the Country where it is used have to be respected also in the case are not mentioned in this manual.

New updated release of the manual will be available on [www.vinteck.com](http://www.vinteck.com)

#### **4- V-10 CLIPPER : technical description**

True bypass system, working with silver golden relays.

10 programmable loops, plus 2 extra loops for amps send return connections or non automated effects. Loop 9 and 10 are stereo. A/B – A+B out controls.

It's possible to connect 6 pedals in front of amps an 4 in effects loops, or 8 and 2. Otherwise, all 10 in line in front of amp.

4 programmable switch completely independent from loops, for amps channel control.

Tuner OUT with MUTE Function MUTE activavle on flight, or programmed.

Programmable Buffer (max +4dB) indipendent for each patch.

Stereo OUT or programmable A/B A+B.

Any combination between loops, switch and MIDI program change is possible.

On any programs (1 to 120) it's possible to assign any program change (MIDI MAPPING) and up to 5 control change with independent channel and value.

12 banks, 10 programs each, total 120 programs.

Each bank may be activated or deactivated (form 0 to 11).

Direct acce on the fligh on loop, with MODE function program/loop

MIDI TAP TEMPO with external pedals, Control Change is assignable from 1 to 128.

MIDI channel manager input, output e 0/1 assignment.

MIDI external expression pedal managing, with Continuos control change

MIDI IN and MIDI OUT with eco THRU (all incoming command comes send out as they are)

High visibility LED display. 3 digit for programa number, up to 7 characters per program.

All programming operations may be done standing up.

External Power supply, 12 VAC or unstabilized DC, 600mA

Dimension 43 x 12 cm. High 4.5/6 cm.

#### **5- installation and wiring**



All connection are on the back of V-10 CLIPPER

Low from right to left of image::

**Power IN** Power suppli input. 12VAC or DC 0.6 A (note: may ne power as well in AC or DC. It is possible to use lower power supply of 0.6 A, keep in mind that in that case will be not possible to activate in same time all switch and loops. When power is connected V10 Clipper is active.

**WARNING: Never open the external power supply. Inside there is 230 or 117 Volt power. Opening of power supply is cause of warranty decline.**

MIDI OUT MIDI out socket  
MIDI IN MIDI IN socket

MN ST	MONO STEREO switch. (in MONO connections 9R-R/S e 10R-R/S (right canne) are deactivated, only left channels works. OUTPUTS A and B got same signal coming from 9 and 10 left loops.
EXT SW	external tap tempo temporary input
Exd	expression pedal input (25 Kohm recommended)
S1-2-3-4	Normalli Open contacts. To be use for amp channel, or any similar application.
OUT R OUT L	signal outputs. OUT L = OUT A, OUT R = OUT B (on pedals indicated as A and B)
- LOOP1-10	loops managed by buttons 1 to 10
S	SEND Signal to input of effect
R	RETURN Signal back from effect.
- X LOOP	fixed llops. Usable for send/return of always active pedals (in ex volume pedal) See schematics. .
- IN	Guitar or bass INPUT
TUNER	Tuner output. Always on even in MUTE.

### PEDALBOARD



leds show:

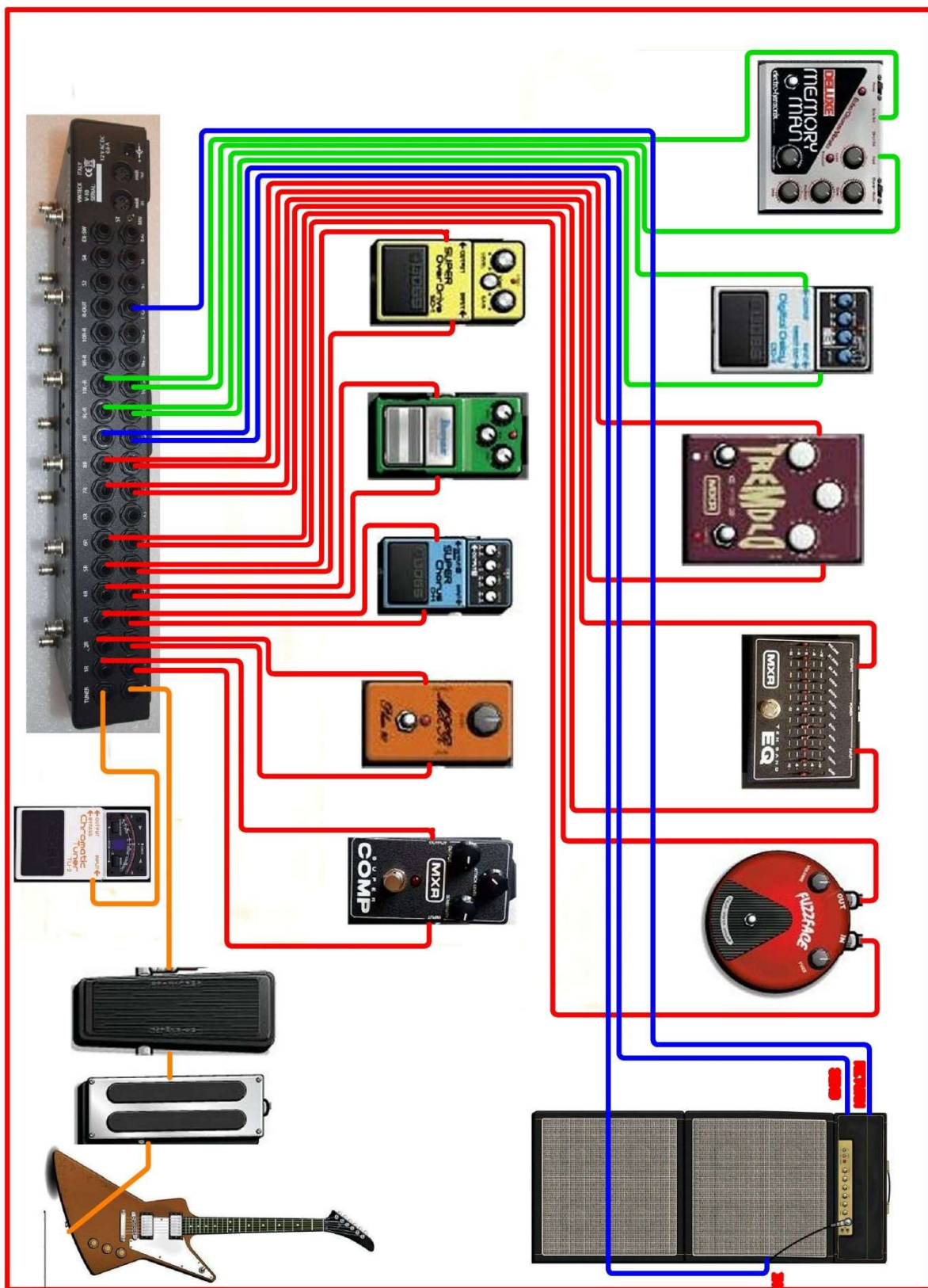
- 1-10 BLUE: loop 1 to 10
- S 1-4 RED switch on/off 1, 2, 3 AND 4 .
- MUTE orange MUTE on.
- BFR GREEN buffer on
- OUT A e
- OUT B YELLOW outputs A (LEFT) and B (RIGHT) ON
- P WHITE : PROGRAM FUNCTION ACTIVE
- L – BLUE. LOOP function active
- C ORANGE shows a control change function active

Buttons 1-10 got dual function: activation of single loop or recall of programs. While in programs mode button allows to program the switches 1-to 4, the buffer, the A and B out and may recall as well up to 5 control changes and MIDI functions.

**WIRING EXAMPLES**

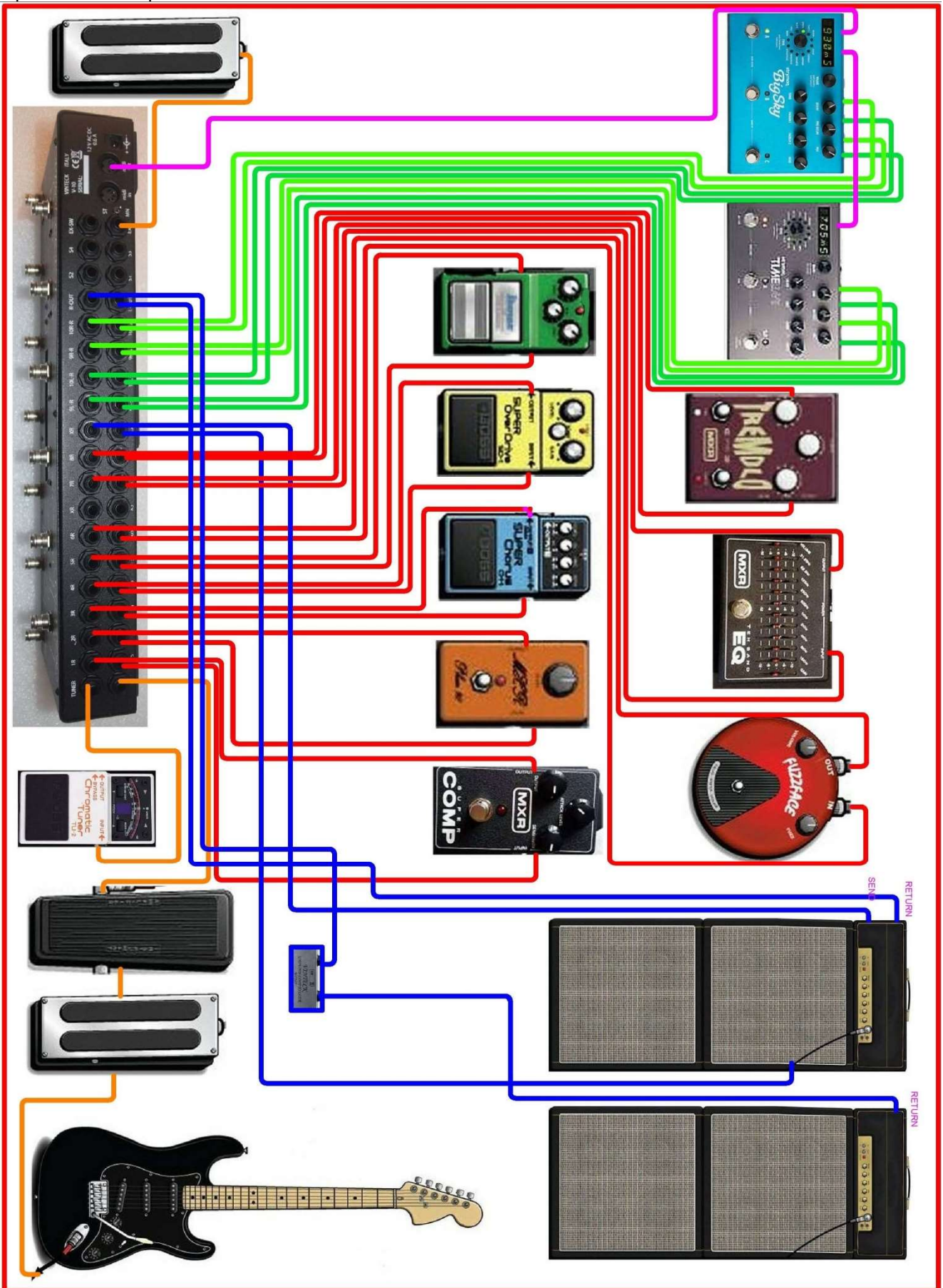
**Followings schematis are only examples. Nor to be inted as LOW !!! Personal choise in sound building is the only real referement!**

**Ex 1. 8 effects in front, 2 effects in send/return. Mono.**



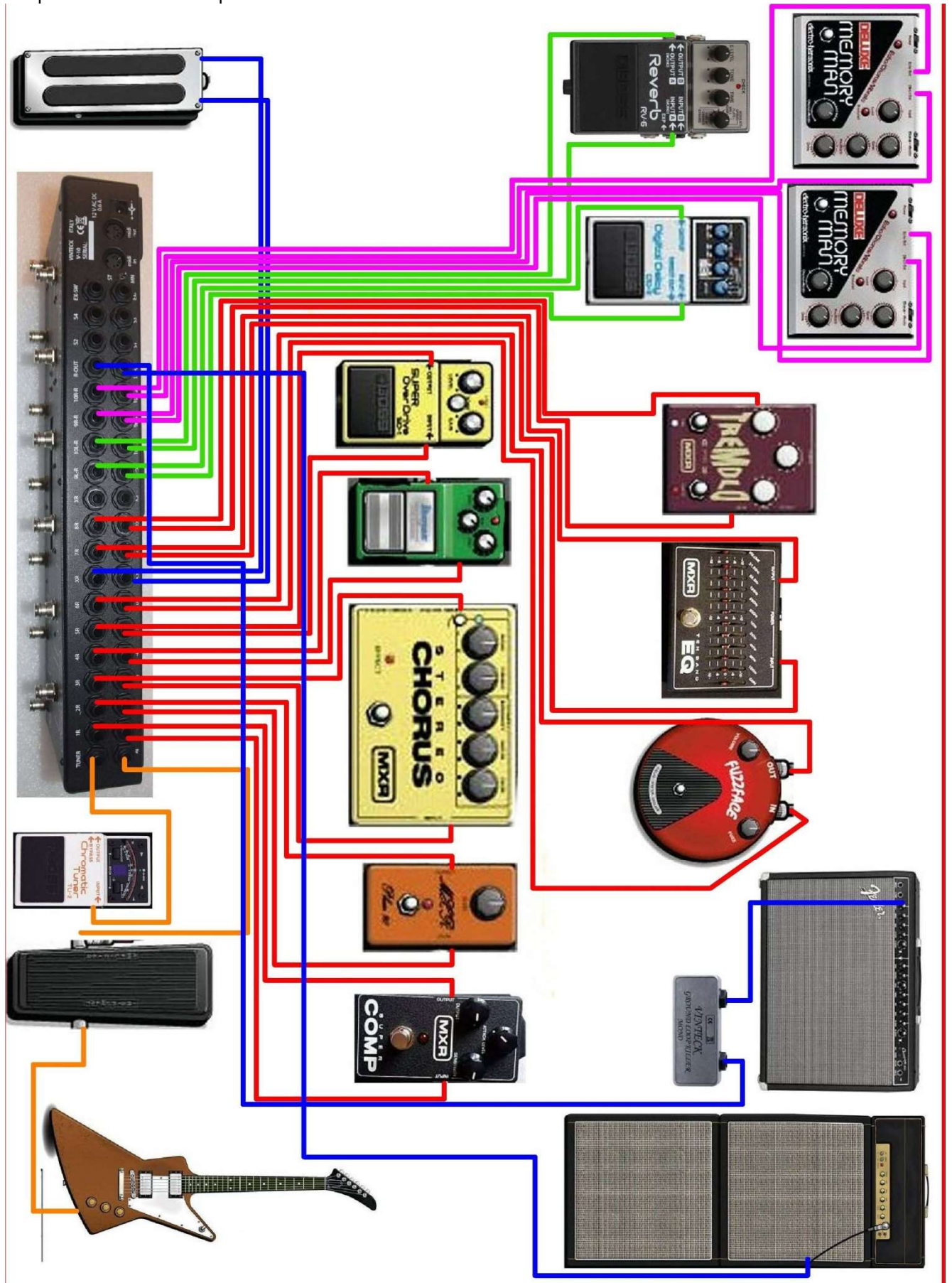
Ex 2

8 effects in front, 2 stereo effects in Send return on 2 amps. Line insulator on amp 2. Midi management and expression MIDI pedal.



**Ex 3**

8 effects in front, 2 couple of effects in stereo in fronte of 2 amps. Line insulator on amp 2.  
Volume pedal after distortion pedals.





---

## 6- USE AND PROGRAMMING OF V-10 CLIPPER. MIDI MANAGEMENT

### FUNCTIONS OF “MD” BUTTON

#### **MD button**

Make selection between LOOP and PROGRAM function of buttons 1 to 10

BLU LED “L” ON buttons 1 to 10 make direct activation of single loops

WHITE led ON button 1 to 10 recall programs

Other function:

While in programming mode MD button gives SAVE function, then close procedure.

Holding pressed MD with WHITE LED “P” on MIDI MAPPING function is activated.

Holding pressed MD with BLUE LED “L” on V10 goes in GLOBAL.

### BUTTON “UP” and “DW” FUNCTIONS

#### **UP BUTTON**

With WHITE LED “P” ON increments the banks, from 0 to 11, if banks are active.

Other functions

In programming mode allows input in “control change assign to patch”

With BLUE LED “L” ON, holding pressed allows access to “**BANK ACTIVATION**” function.

#### **DW BUTTON**

With WHITE LED “P” ON decrements the banks, from 0 to 11, if banks are active.

Other functions

In programming mode allows input in “PATCH NAME ON DISPLAY”

#### **MUTE Function**

MUTE (silence oc pedalboard, with TUNER out Active) is activable pressing DW while in LOOP MODE

MUTE is also assignable to any patch, if needed.

**GLOBAL FUNCTION**

GLOBAL allows predefinition of following operative parameters, as in following table.

But ton	FUNCTION	COMMAND 1	COMMAND 2	VALUE	OUT SAVE	DEF A ULT
1	MIDI in channel	UP DW		0 – omni 1- 16	MD	0
2	MIDI out canne, MASTER	UP DW		1-16	MD	1
3	MIDI numbering 0-127 / 1-128	UP DW		0 - 1	MD	1
4	External Tap Tempo Control Change	UP DW		0-127	MD	80
5	Control Change assignament to buttons 1 2 3 4 5	P1,P2,P3, P4, P5 UP / DW	P6-CC nr	0-120	MD	000
			P7- OUT channel	1-16	MD	1
			P8- CC value	0-127	MD	000
6	External expression pedal Expression pedal calibration Values assignament	P1,P 2, P3 UP, DW	P1- pedale value	0-255	MD	255- 255
			P2- LOW limit	0-127	MD	000
			P3- HIGH limit	0-127	MD	000
7	Buffer ON / OFF global	UP, DW	P10		MD	OFF
8						
9	Switch 1, 2, 3 e 4: latch, single shot, dual shot	UP, DW 1,2,3,4	LATCH SINGLE SHOT DUAL SHOT		MD	LAT CH
10	BANKS activation	UP, DW	1-10	ACTIVE OFF	MD	1-on

**GLOBAL FUNTION ENTER**

With blue led “L” press and hold MD for 4 seconds

Display show GLOBAL

Press button corresponding to wanted function

**1- MIDI input channel**

Display show MIDI IN followed by a number from 00 to 16.

00 is OMNI, all channels ON.

Make selection with UP and DW (down).

Save and exit with MD

**2- MIDI output channe**

Display show MIDI OUT followed by a number from 1 to 16

Make selection with UP and DW (down).

Save and exit with MD

**Nota:** this selection is general, may be changed for any control change

**3- Numbering of MIDI 0-127 / 1-128**

Display show MIDI followed by a number from 0 to 1

0 = 0-127 , 1= 1-128

Make selection with UP and DW (down).

Save and exit with MD

**4- External Tap Tempo Control Change value**

With an external temporary button, to be connected to EX\_SW, is possible to send a CONTROL CHANGE command for tap tempo in any moment, independent from programs.

Any kind of temporary button may be used.

Top reset the CONTROL CHANGE:

Display show TAP followed by a number from 1 to 128

Make selection with UP and DW (down).

Save and exit with MD

Note: on some devices CC for tap is 80. Check on device user manual to preset the right value.

**5- Control Changes assign to buttons 1-5, Value and channels**

With this commando is possible assign up to 5 control change to buttons 1, 2, 3, 4, 5 to be able to recall them on patch.

The CC of button 5 is dedicated to Expression pedal

Display show CC1=000

Pressing buttons 1-5 shows respectively :

CC1=000

CC2=000

CC3=000

CC4=000

CC5=000

For each single button is possible assign the CC, the channel and the value.

Button **6** assign the nr of CC: UP e DW for selection, value from 1 to 120)

- Display show CC1 : 000 ( from 000 to 120)

Button **7** assign the CHANNEL of CC: UP e DW for selection, value from 1 to 16

- Display show CC CH 1 : 016 ( from 000 to 016)

Button **8** assign the VALUE of CC: UP e DW for selection, value from 0 to 127

- Display show CCV1 : 000 ( from 000 to 127)

Note: for CC of button 5 values have to be preset in **function 6**

Save and exit with MD

Orange LED "C" blinks to show that you're working on CC

**6- External expression pedal calibration. CC value assignement.**

Chose 1 (button 1): display show:

EXP 255 255

This is the range of calibration of external expression pedal..

Move up and down the expression pedal. Calibration is tuned. Value may be from 0 to 255

- Display show EXP 255 255 (basic. After calibration may be 0 to 255)

Button 2 assign the **CC LOWER END** from 0 to 128. Make selection with UP and DW

- Display show EXP L : 000

- Button 2 assign the **CC UPPER END** from 0 to 128. Make selection with UP and DW

- Visualizzato EXP U : 000

Save and exit with MD

## 7- GLOBAL BUFFER ON/OFF

It is possible to activate or deactivate the buffer on all programs.  
One by one it is possible to manage ON / OFF on any program.

Press 7 to select.

Display shows ALL B ON or ALL B OFF

Press UP or DW to choose

Confirm selection with P10 ( button 10)

Display shows for a while 001 a 120 followed by PROG ON

Do not stop anyway the sequence. It's just take a while,

Sequence ends and exit automatically.

8- Unused.

## 9- Switch 1, 2, 3 and 4: latch, single shot, dual shot

The 4 switches for amp channels may be preset in 3 operation ways.

- Latch
- Single shot
- Dual shot (shot in ON , second shot in OFF)

From GLOBAL press button 9

Display shows SW1 : LATCH

With buttons 1,2,3,4 make selection (switch 1, 2, 3, 4)

With UP and DW select kind of: LATCH, SSHOT, DSHOT

Save and exit with MD

## 10- Bank activation

V-10 CLIPPER may memorize up to 12 banks, 10 programs each.

For easy management it is possible to activate only some of 12 banks.

Note: Not active banks keep in memory patches programmed.

To obtain activation of banks in GLOBAL choose 10

Display shows B00-ACTIVE

With UP and DW select banks, from 00 to 11

Press any button (1 to 10) to change status OFF or ACTIVE

Save and exit with MD

## **PATCH PROGRAMMING**

Available programs are 100. 10 patch for 10 banks.

On any programs (patch) it is possible to assign:

- Any combination on/off of 10 loops
- Any combination on/off of 4 switch
- buffer on/off
- out A , out B
- MUTE ( when MUTE is programmed no signal comes out from V-10 Clipper)
- MIDI program change (1-128) and out channel (1-16)
- Up to 5 Control Change (1-128) e related midi out channel OUT (1-16)

### **Programming Loops, switches, buffer, mute and A/B out**

Whit white led "P" ON (selection with MD)

Hold button of choose program (from 1 to 10) . Keep it for about 3 seconds.

Blinkin of white led means that V-10 is in programming mode.

Press button of loops to be activated. Relative blue led will ON to show selection.

To select switches 1-4 keep pressed relative buttons (1, 2, 3, 4) for about 3 seconds up to red LED switch light ON.

For BUFFER patch activation or deactivation press 7 and keep up to GREEN led come on or off .

For MUTE patch activation or deactivation press 7 and keep up to GREEN led come on or off .

OUT A and OUT B (relative to OUT L and OUT R in wiring) are always open (yellow led on)

To switches them OFF keep them pressed up to yellow leds comes OFF

Save and exit with MD

### **Chain up to 5 Control Change to one patch**

While in programming of patch (WHITE LED LED BLINKING) press button UP.

Orange led will blink, to confirm assign procedure.

Pressing buttons 1 to 5 control change pre-assigned in GLOBAL (see GLOBAL 5), CC are chained to patch program.

Display show CC 1 2 3 4 5 , followings preset done.

Save and exit with MD

To complete save procedure press once MD

### **PRESET NAME**

While programmin (white led "P" blinking ) press DW

Procedure is similar to "sms text on phone"

Display show number of program (ex 001) followed by x.....

Use the 1-10 buttons, following indication under button ( ex. 1= ABC1)

As soon as selected one letter display goes on following.

Max number of characters is 7 for any patch.

Save and exit with MD

To complete save procedure press once MD

**PROGRAM CHANGE MIDI MAPPING.****Software release DCEA**

It is possible to assign a PROGRAM CHANGE different from patch number.

Default is program change = patch number.

To change program change:

While on the patch (ex 003, anyway 1 to 120) with white led "P" on :

Hold pressed MD for 3 secs

Display show : 001 PC : 000

Use UP and DW (down) to select desiderate Program change number

Selection is done.

Save and exit with MD

Note: when recalled a preset whit Control Change chained, the orange led will blink to show that Control change are active and send.

**PROGRAM CHANGE MIDI MAPPING. – ASSIGN OF 1, 2 or 3 PROGRAM CHANGE****Firmware release SW 0682**

It is possible to assign up to 3 different PROGRAM CHANGE on different CHANNELS for any single program / patch , from 1 to 100

As default any program/patch got corrsponding PROGRAM CHANGE (1 = 1, 2= 2 etc)) and send only 1 PC.

To set up PC anch channels:

Recall the program to modify (1 -100)

With white led "P" on, press MD ank keep pressed for 3 seconds.

Display show: 001 P1 : 001 (001-> patch P1-> program : 001 the number of CC)

With UP or DW it's possible to change the PC from 1 to 128

Pressing pulsant "5" display show 001 CH1 : 01

Pressing UP or DW is possible to change the channel, from 1 to 16

Then:

pressing pulsant 2

display show 001 P2 : 000

with UP and DW is possible select from 1 to 128. 000 means NO PC

Press pulsant "6" display show 002 CH1 : 01

With UP and DW is possible to slect from 1 to 16

Then:

pressing pulsant 3

display show 001 P3 : 000

with UP and DW is possible select from 1 to 128. 000 means NO PC

Press pulsant "7" display show 003 CH1 : 01

With UP and DW is possible to slect from 1 to 16

Exit and save with MD

## **FACTORY RESET**

On V-10 CLIPPER8 it's possible to return to beginning default settings.

To make Factory reset:

Shot down power supply, removing power supply cord

Press buttons 1 and 6 together, keep pressed and reinsert power supply.

Display show, after beginning on procedure, "FACTORY R" , as Initialization.

Release buttons.

Note: Factory reset is not reversible.

Warning: procedure may takes up to 20 seconds. Do not stop procedure and do not remove power supply.

In case after 30 secs display stay off, or SW code remain fixed remove power supply. Than reinsert power.

Procedure may needs two times of power on and OFF.

**Factory reset is not reversible.**

## **7-Spare parts**

<b>Codice</b>	<b>descrizione</b>
TB10S7	Button
TB10BF	Buffer integrated circuit
V-Series-PS	External power supply

## **8-warranty and terms**

**V-10 CLIPPER is covered by warranty for 24 month from purchase**

**Aany warranty will be made at the vinteck labs**

**Lab: via Limone 22 – 10141 Torino Italy**

Shipping cost are charged to customers after 1 year.

All operation and any spare parts are covered by warranty.

Warranty do not cover the following cases:

- Uncured utilization
- Damage from transportations
- Repairing and changes made without authorization
- Athmosferic Events
- Incorrect use of instruments
- Power supply not correct
- Use of not original spare parts
- Partial or total non-observance of the instructions;
- Use of the machine against national specific laws.;
- Calamity and unusual events.

## 9 support

Any information about "how to use" or any technical problems may be send by email to:

[support@vinteck.com](mailto:support@vinteck.com)

or to

[info@vinteck.com](mailto:info@vinteck.com)

### DECLARATION OF CONFORMITY

Application of Council Directive(s):	89/336/EEC and 93/68/EEC
Standard(s) to which Conformity is Declared	EN 55103-1, EN 55103-2 and 60062: 1998
Manufacturer	Vinteck SAS di Guido Michetti & C. Corso Vittorio Emanuele II, 123 10128 Torino – ITALY The equipment identified here conforms to the Directive(s) and Standards specified above
Type of equipment	Effects switching system
Model	TB10MKII – TB5+ V-UNO- V-8 , V-5, V10
Data	september 2007

Vinteck sas  
di Guido Michetti & C.  
corso Vittorio Emanulele II 123  
10128 Torino Italy